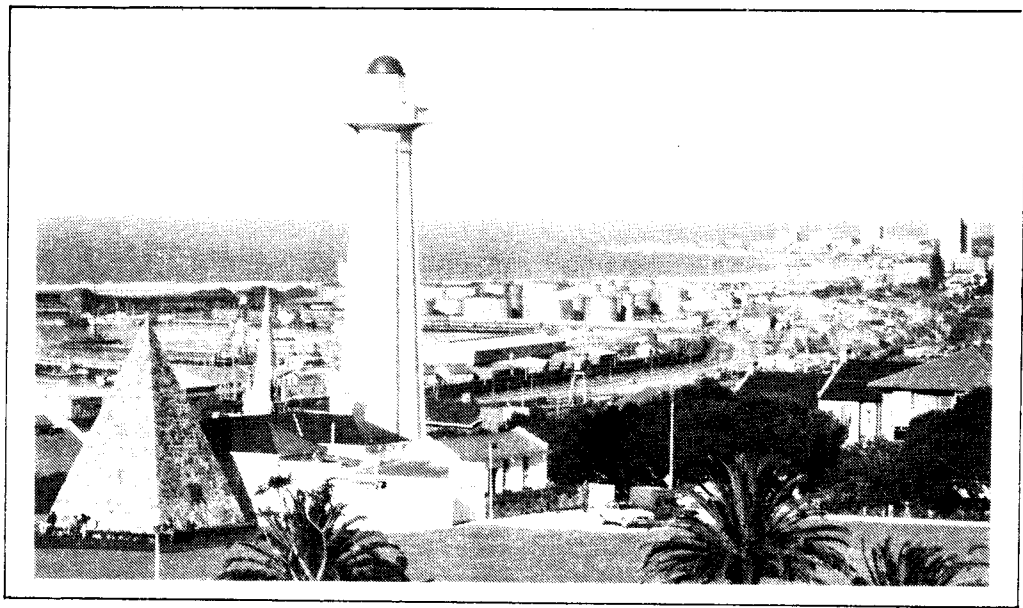
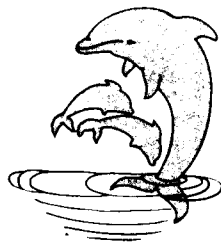




# Q S X P E



**THIS NEWSLETTER IS PUBLISHED BY THE  
PORT ELIZABETH BRANCH OF THE SOUTH  
AFRICAN RADIO LEAGUE.**

**P.O. BOX 10402  
LINTON GRANGE  
6015**



PORT ELIZABETH BRANCH,  
NOTICE OF MONTHLY MEETING.

Members are reminded that the next meeting of the Branch will be held on Friday 20th January, 1989 at St. Martins Church Hall in Kabega Park, at 8.15p.m.

COMMITTEE.

CHAIRMAN	Marge Weller	ZS2OB	30-4597
VICE CHAIRMAN	Brian Weller	ZS2AB	30-3498
SECRETARY	Owen Wheeler	ZS2HZ	38-1310
TREASURER	Colin Robertson	ZS2CTR	30-0570
SPECIAL/SOCIAL	Beavan Gwilt	ZS2RL and	30-6968
EVENTS	Dick Schonborn	ZS2RS	2-1356
AWARDS	Bill Hodges	ZR2AAN	51-2580
EDITOR QSX-PE	Marge Weller	ZS2OB	30-4597
MEMBER	Lynne Crothall	ZS2MM	35-4671
REPEATER WORKING			
GROUP - CHAIRMAN	Trevor Scarr	ZS2AE	32-1746
LIBRARIAN	Colin Ashwell	ZS2AO	31-2471

BULLETIN ROSTER.

<u>DATE.</u>	<u>COMPILER.</u>	<u>40m NET.</u>	<u>2m NET.</u>
22 January	Marge ZS2OB	ZS2OB	ZR2AAN
29 January	Owen ZS2HZ	ZS2HZ	ZS2MM
5 February	Colin ZS2CTR	ZS2CTR	ZS2AB
12 February	Beavan ZS2RL	ZS2RL	ZS2HZ
19 February	Dick ZS2RS	ZS2RS	ZR2AAN

SUNDAY BULLETIN INFORMATION.

Primary Frequencies for bulletins at approximately 08.40  
H.F. 7098 kHz in 40 metre band. VHF 145,650 MHz - Town Repeater  
Other relays where necessary.

BRANCH V.H.F. SERVICES PROVIDED.

TOWN REPEATER (P.E. CENTRAL)	145,050 / 145,650 MHz
GRAHAMSTOWN REPEATER	145,150 / 145,750 MHz
LADYS SLIPPER REPEATER	145,100 / 145,700 MHz
COCKSCOMB REPEATER	145,000 / 145,600 MHz
BEACON (C.W. ID ZS2PE)	144,910 MHz

\*\*\*\*\* WE LIKE BEING YOUR BRANCH \*\*\*\*\*

# THIS AND THAT

## HAPPY NEW YEAR.

On behalf of the Chairman and Committee, I would like to extend very best wishes for a peaceful, happy, healthy and prosperous New Year to all our members and their families and all members of the Amateur fraternity in South Africa and may 1989 bring us all we wish for ourselves and our country.

## WELCOME.

We extend a hearty welcome to John Pearson of Port Alfred and wish you a happy, long and fruitful stay with the Branch and League.

## PERMANENT LOAFERS CLUB.

This Club welcomes another new member, Del Colson ZS2NS who has decided to take early retirement because his work was interfering with his hobbies of yachting, fishing and amateur radio. We hope that you will find time to get your tower and beam up, Del and also take some trips around the country exploring!

## CONGRATULATIONS.

To Colin Robertson ZS2CTR who has now completed 200 contacts on cw and has applied for his phone licence. Well done, Colin.

## BALLOT.

At the time of going to press, more than 50% of the ballots had been received and full details will be given next issue. So far the decision to merge the two branches has been unanimous.

## FOR SALE.

Kenwood TR930 2 metre all mode - FM, SSB and CW - transceiver with mobile bracket, operating and service manuals in excellent condition. R1300. Contact Beavan ZS2RL - 041-306968.

## WEATHER FAX.

Plans are going ahead for the transmitter to be set up at the Museum and transmissions to start on a permanent basis. For those who have already built up their kits or have facilities to copy, Brian ZS2AB will run transmissions for test purposes. Please contact him on 30-3498. Those who still wish to order kits should please let him know as soon as possible.

MINUTES OF THE GENERAL MEETING OF THE PORT ELIZABETH BRANCH OF THE S.A.R.L. HELD AT ST. MARTINS CHURCH HALL, KABEGA, ON 18TH NOVEMBER, 1988.

PRESENT: 30 members and visitors.

APOLOGIES: ZS2s CA, CZ, LR, LW, R, ZR2AAQ.

Marge ZS2OB opened the meeting and welcomed all to the last meeting of 1988. A special welcome to Ray ZR2BF, Attie ZR2DY, Toff ZS2AAW, Basil ZS2PG, Andre ZS2BK, also Sean and Keith.

At this point, Gus ZS2MC was called to the Chair and presented with a gift from the Branch in recognition of his fine business efforts over the past number of years in auditing the branch books.

MINUTES: The minutes of the last general meeting were taken as read in Q5X, proposed by Viv ZS2VM and seconded by Andre ZS2BK.

MATTERS ARISING: Field Day - Marge thanked all for their help during the last Field Day contest, especially Wolf ZS2WG who had completed the logs. A total of approximately 60 - 70 000 points were claimed and all were congratulated on this fine effort.

Branch Lunch - Beavan ZS2RL said that there would be 29 adults and 5 juniors attending the branch lunch to be held at Windo-mayne Tea Gardens.

FINANCE: Colin ZS2CTR reported as follows:

Transmission account	R500,00
Special Savings	R3842,77
Fixed Deposit	R1500,00

Income during the month totalled R193,91 and expenses totalled R34,32 leaving the balances in all accounts at R6002,36.

GENERAL: Trevor ZS2AE was asked about the general position of the repeaters - he replied that there was nothing to report. Lionel ZS2DD said that the crystals for the packet radio system would be ordered in the near future.

CORRESPONDENCE: There was a letter from the Johannesburg Branch concerning the motions for the 1989 A.G.M. Marge suggested that as these were long and drawn out, we would talk about them at

another meeting before the A.G.M.

Also received was a letter from Sam Abrahams ZS2SI regarding the possibility of a tax deduction on imported amateur radio equipment. This was discussed among the Branch members and it was suggested that a motion by the P.E. Branch be put to the 1989 A.G.M. to try and obtain relief from the surcharge on the purchase of amateur radio equipment and spares.

A letter was received from Al ZS2U concerning the merger between the Algoa and P.E. Branches. A vote was taken to determine the feelings of the members and on a show of hands, the decision was unanimous that the merger go ahead. Marge said that further details would be discussed during the following committee meeting.

Simplex 2 metre repeater.

Owen ZS2HZ reported that the 6 metre 2 element beam had been installed on Ladys Slipper Mountain and he would endeavour to put the simplex link on test before Christmas.

At this stage tea was taken, after which Marge handed the meeting over to Ray Bentley ZR2BF who gave a very interesting talk on telecommunications past, present and future. This was followed by an interesting talk and demonstration on Weather Fax given by Brian ZS2AB.

There being no further business, the meeting closed at approximately 10.55p.m.

signed:

M.T. Weller ZS2OB  
Chairman

D.T. Wheeler ZS2HZ  
Secretary



**Instant Printing**



TELEPHONE 22614

9 ST. PATRICK'S ROAD  
PORT ELIZABETH  
6001

FOR ALL YOUR COMMERCIAL PRINTING REQUIREMENTS  
TRY US FOR YOUR QSL CARDS!

## WORKING DX.

This article was written by Nick Moon ZS6BBY and appeared in "ZS6TJ CALLING" - August, 1988.

-----

This article, I trust will help those who have just obtained their unrestricted class licence - ZS - or have been on HF for a while and are still not sure on how to work that DX like the 'big guns' do. It is true that some on HF are only interested in a natter with friends and detest the so-called rubber stamp QSO, or go on HF to test some equipment they have just built, but for many of us on HF, chasing DX takes up most of our time

How many times have you heard one or more stations on a repeater or a group at your local meeting talking about this or that DX station that they have worked? You think to yourself, where is this station, and even more important "how did they work it?"

Working DX is not something magic, but what is important is your station line-up and to a lesser degree, a basic knowledge of geography. With regards to your station, you need to have the best set-up. This does not mean the most expensive HF rig or linear amplifier or antenna on the market, but what YOU can afford to do the job. Today many amateurs feel that 2 kW is the only way to work DX. I do not agree with 2kW, but a few hundred watts could make the difference between getting or not getting the contact.

Antennas. The antenna you choose depends on your pocket and space that is available. The cheapest antenna by far is the wire antenna. This could be in the basic form of a long-wire or dipole, etc., and if constructed and tuned properly, can be very efficient with only 100 watts. In fact, I have used the inverted 'V' antenna at only 10m in height to work the 40m and 80m bands for a number of years and have well over 100 countries confirmed on each of these bands. If at your location, you have the space, then a rotary antenna is the way to go, a yagi or quad for example. But we have to remember that, whatever antenna is being used, from the long-wire to a mono-band antenna, if conditions are poor, then contacts are hard to get.

Equipment. A rig for Dx-ing should be able to work split frequency. It could be a separate transmitter and receiver, a transmitter with an external (outboard) VFO or a transceiver with two VFOs (twin VFOs are a standard function of most modern transceivers). You will see in the working split section why 2 VFOs are needed. When it comes to the microphone, I feel that this is up to the operator to choose. My feeling is that the choice should fall on the one that best reproduces your voice with the greatest clarity. (Note from Editor: don't forget, you can still work DXCC on all 5 bands using CW as well and you can be almost 100% sure of getting a QSL card).

By now you are asking yourself, what about the linear amplifier: where does it come in, or is there a need for it? Well, this is where it comes in and if we are going to work DX and hold our own with the big signals from overseas, the answer is YES there is a need for it. But before you go out and spend all that hard-earned money on an amplifier or start building one, I suggest that you work barefoot (100w) for some time, so that you get used to working DX and the people next door get used to the antenna in the sky. (Another note from the Editor: I have well over 200 countries confirmed, and have never used a linear amplifier, so don't get put off. Patience also helps). Finally, I would suggest that you get a good pair of headphones, when it comes to working those rare DX stations you need to hear everything that is going on.

The Real Thing. Now that you have set up a station, you want to get started on working that DX that you have heard so much about. Well, where do we start? Not by calling CQ DX. Why, you ask? Well, that is because if you ask any serious DX-er, a good DX-er spends 90% of the time listening and 10% talking!

Right, you sit down with a DXCC countries list, start tuning the bands and you will be very surprised as to how many countries you can hear.

Well, you are now going to give a station calling CQ DX a call Tune up first (not on his frequency, use a dummy load). When he has finished calling DX, you go back to his call by simply giving your callsign a few times and waiting to be called. When you have established the contact, carry on the QSO however you wish, it normally starts with their signal report,

then your name and your QTH, remembering that ours is not a rare DX country. Working the basic 100 DXCC countries is quite easily done from here in South Africa. In fact, we could manage this in a few days. However, getting the QSL cards will take a lot longer. With a bit of a wait, the newcomer will soon have enough cards (100) to apply for the DXCC - this being one of the most popular awards. After having worked the first 100 countries, the newcomer might have caught the DX bug really badly and decided to go the whole hog and get on the DXCC honour roll (319 countries). This could be impossible, as a number of countries don't permit Amateur Radio and at this time a number of countries are not permitted to work South Africa. But please don't be put off by this, we can still work over 295 countries. This number could take many years to obtain due to the fact that many countries are on the air only during dx-expeditions.

Having obtained DXCC this might be a time to obtain that amplifier, after all, getting the next 100 countries and more could prove to be a lot more difficult. I will make a suggestion here, that is, start getting DX news from one of the DXers or DX groups in your club, as they will know what expeditions or hard-to-come-by countries are going to be active. Another method of finding out about what countries are going to be active is to check into some of the ever-increasing DX Nets -these are becoming more popular with expeditions.

Net Operation. When checking into a DX net, wait until the net controller asks for check-ins from Africa, then simply give your callsign once and wait to be acknowledged. If the controller does not acknowledge you, then give your callsign again, don't keep shouting ZS...., this only serves to upset everyone on the net. If the controller has not heard you by now, one of the other stations on the net will probably let them know you are there. Now that you have checked in, keep your ears open for the station you wish to work, remembering when working DX through a net, only one station is to be called, as there will probably be a lot of stations waiting to work them as well.

(To be continued next month)



## WHAT ACTION WOULD YOU TAKE?

### CASE 1.

A member of your family touches a damaged electrical appliance and begins receiving a shock. Do you run to them and try to pull them away with your bare hands?

Wrong. The best thing to do would be to run to the mains switch and turn the electricity off. If the mains switch cannot be reached, remove the wire or appliance causing the shock with a dry broom handle, stick or bundle of clothing. If shock is severe and breathing has stopped, begin artificial respiration immediately. Call professional help.

NEVER TOUCH A PERSON BEING SHOCKED WITH BARE HANDS, OR A METAL OR WET OBJECT, BEFORE CONTACT IS BROKEN.

### CASE 2.

Someone pulls down a pot of boiling liquid and badly scalds himself. Do you treat them with butter, ointment or a homemade remedy of your own?

Wrong. Place the burnt part under water (an ice or cold pack can be applied to areas of the body or face). Keep it there for about 10 minutes or until pain eases. Remove anything tight before swelling begins. A non-adhesive dressing should be used (or a clean cloth, handkerchief, etc). If the burn is bad, a doctor should be consulted.

### CASE 3.

You find a child drinking from something poisonous like ammonia or cleaning fluids. Do you panic and immediately try to make him vomit up the poison?

Wrong. Although with most poisons inducing vomiting is necessary, it is dangerous to vomit substances that are corrosive e.g. caustic soda, bleach, etc., or petroleum based, e.g. paraffin, liquid polish, etc. First examine the container to see if there is a quick remedy. Give the child lots of milk or water to dilute the poison - vegetable oil is also useful as this protects the digestive tract. Phone a doctor or hospital immediately, giving the brand name and contents of the substance.

#### CASE 4.

Someone cuts themself and starts bleeding heavily. Do you mop up the blood and keep mopping until the bleeding stops?

Wrong. If the wound is deep it will take a long time to stop bleeding and much blood could be lost. MOST CASES OF BLEEDING CAN BE STOPPED WITH SIMPLE, DIRECT PRESSURE.

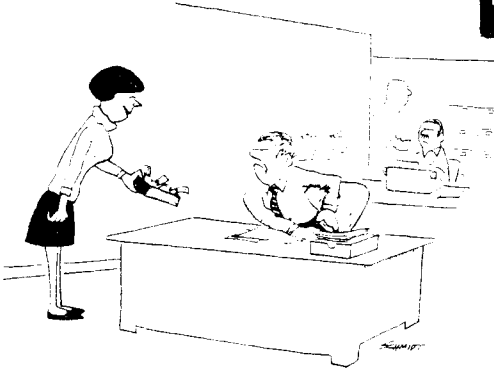
Put a pad of gauze or the cleanest material available, over the wound and press firmly and continuously against it for 5 - 15 minutes. If the dressing becomes soaked, add another over the first. This avoids further contact and possible contamination. Once the bleeding is controlled, fasten the dressing with adhesive tape.

Of course, prevention is better than cure. Nearly all accidents that occur in the home are preventable. Why not "hazard hunt" your home? Here are some areas to look out for:-

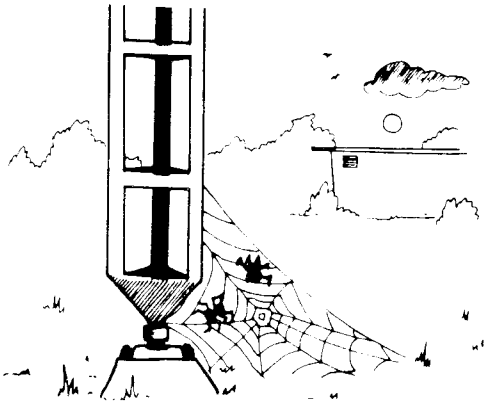
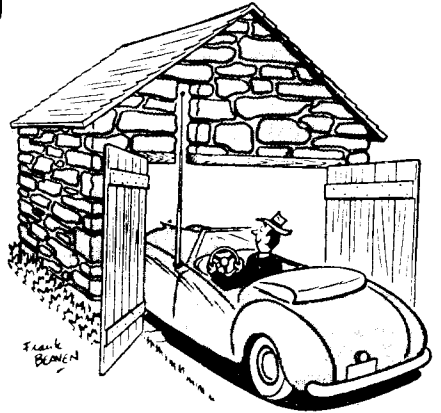
- \* check electrical appliances regularly for frayed wires
- \* avoid long extension cords (if cords are essential, keep them hoisted high, so that children can't pull appliances on top of them)
- \* wall sockets should be of the safety type
- \* always turn handles of pots and pans inwards
- \* don't place hot dishes, etc. on table cloths that can be pulled off by toddlers
- \* keep containers with poisonous, flammable or corrosive substances well closed and locked away
- \* keep medicine cabinets locked and out of reach of children
- \* don't keep leftover medicines, even if you think they may be useful again
- \* keep fish ponds covered with safety netting - swimming pools are an obvious danger
- \* all children should be able to phone emergency numbers and be taught to give their names and address details slowly and clearly

REMEMBER - SAFETY STARTS AT HOME.

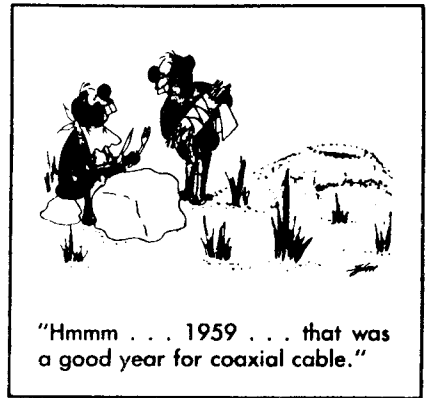
# hi



*"It's the transmitter's birthday."*



*"Hang on. When they first turn this thing on, there's a jolt."*



*"Hmmm . . . 1959 . . . that was a good year for coaxial cable."*

Secretary to boss: "The rat race being what it is, I could use more cheese each week."

The shoemaker was explaining to a complaining customer the reason for the poor quality of his soles: "All the best leather is going into steaks these days."

Husband to wife as they leave their young son with a baby-sitter for the evening: "I still say that when they begin asking for a blonde instead of a brunette, they're old enough to stay alone!"

Man to wife: "I'm tired of you and your suicide attempts — look at these gas bills!"



# PETERSEN & SMITHIES

**THE Engine Rebuilders**  
Specialists in Veteran car engines.

3 HANCOCK STREET, NORTH END

☎041-543669/0

ASK FOR LEO SMITHIES

# HENROSE PRODUCTS (PTY) LTD (EDMS) BPK

MANUFACTURERS OF PLASTIC BAGS  
PRODUCERS OF FRUIT JUICES  
"ORANG-U-TANG"  
AND "LEKKA LIKS" FROZEN SUCKERS

VERVAARDIGERS VAN PLASTIEKSASSE  
VERVAARDIGERS VAN VRUGTE SAPPE  
"ORANG-U-TANG" EN  
"LEKKA LIKS" VERVRIESTE YSBLOKKE

TEL. 546470

5-7 EDGAR LANE

NORTH END

PORT ELIZABETH, 6001

# Slim Well Slimming Club CC

Registration No. CK88/13270/23



REGISTERED OFFICE.

25 Olive Schreiner Avenue  
van der Stel

PORT ELIZABETH.

Telephone: (041) 30-4597


(Answering Machine available)

POSTAL ADDRESS

P.O. Box 10317

Linton Grange

6015.




## E.P. MUFFLERS

EXHAUST FITTING AND PIPE BENDING  
SPECIALISTS AND MANUFACTURERS

**ALSO:**  
TOWBARS  
BATTERIES  
SHOCK  
ABSORBERS

**MILD STEEL  
FULLY  
GUARANTEED**

**STAINLESS  
STEEL  
LIFETIME  
GUARANTEE**



TRY IT!

**545420**

29 EMBASSY STREET, NORTH END, P.E.

ALSO IN GRAHAMSTOWN  
(0481) 28448  
5 HOWSE STREET

# BAMBOO SNACKS

For delicious Chinese Take-aways  
in the Western Suburbs.

OLD CAPE ROAD  
KABEGA PARK, PORT ELIZABETH

PHONE 30-4390

## Express Number plates & 'SIGNS'

INC  
**FLEKTI-PLATE**

REG 65 007288 07

Tel 54 2834 / 54 1501 / 54 1652

23a De Villiers St

Port Elizabeth

PO Box 2587

North End 6056